

RECOMMENDED P.C.B LAYOUT
GENERAL TOLERANCE ± 0.05

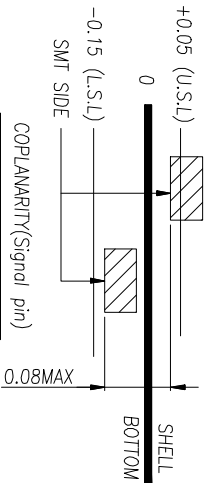
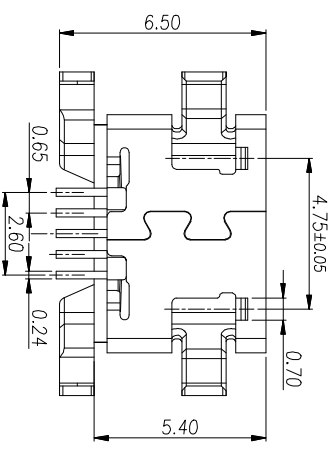
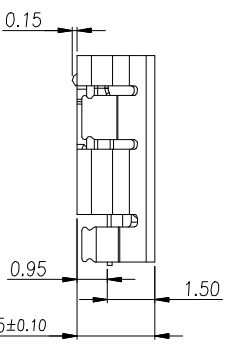
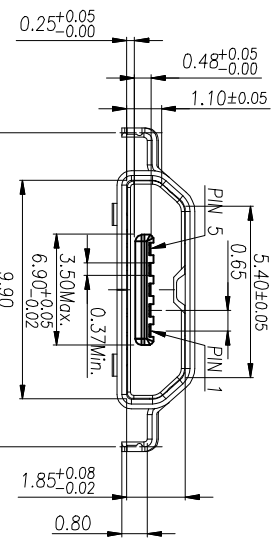
NOTES:

- 1.) MATERIAL:
 1-1. HOUSING: THERMOPLASTIC, UL 94V-0, COLOR: BLACK;
 1-2. CONTACT: COPPER ALLOY T=0.15mm;
 1-3. SHELL: STAINLESS STEEL T=0.30mm;
 1-4. Guide: STAINLESS STEEL T=0.12mm;

- 2.) FINISH:
 2-1. CONTACT: 15u Au PLATE ON CONTACT AREA,
 1-3u Au PLATE ON SOLDER TAIL,
 50u MIN NICKEL ON ALL SURFACE,
 2-2. SHELL: 50u Ni MIN UNDER PLATED OVER ALL
 1-3u Au PLATED ON SOLDER AREA)

- 3.) SPECIFICATIONS:
 3-1. VOLTAGE RATING: 100VAC
 3-2. CURRENT RATING: 2.5A
 3-3. INSULATION RESISTANCE: 100MEG.OHM MIN
 3-4. CONTACT RESISTANCE: 50 MILL.OHM MAX
 3-5. OPERATION TEMPERATURE: -20° TO +65°
 3-6. INSERT FORCE: 8-20N
 3-7. EXTRACT FORCE: 8-20N
 3-8. DURABILITY: 10000 CYCLES

- 4.) PART NO: U22-X B 05 X XX 0
 TYPE: _____ HEIGHT: 15±1.50mm
 4=反拔高度 1.0MM DIP
 FINISH: FLASH(SHELL TIN)
 F:GOLD
 A:5u MIN GOLD
 B:10u MIN GOLD
 C:15u MIN GOLD
 D:30u MIN GOLD
 G:GOLD FLASH
 COLOR: _____
 B=BLACK
 PIN NO: _____
 OS=SPIN



UNITS:	mm
GENERAL TOLERANCE	
X	± 0.30
X	± 0.20
XX	± 0.10
XXX	± 0.05
DATE:	04/23/2019
SCALE:	1/1
SHEET:	8/1
FINISH:	SEE NOTE
SEE NOTE	

DATE:	04/23/2019
SCALE:	1/1
SHEET:	8/1
FINISH:	SEE NOTE
SEE NOTE	

REV.	ECN NO.	DESCRIPTION	DATE	REV.	A
A		新增零件	04/23/2019	A	